

Commercial Aircraft Edition

November 2024

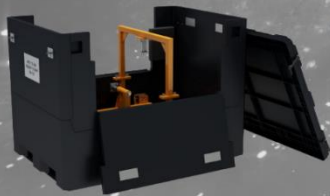
Welcome to the latest issue of **WINGSLIST**, your bi-monthly aircraft, engine, and accessory trading publication. Please spread the word to anyone you believe would benefit from Wingslist and receive a **free banner ad** – in this publication and on the Wingslist.com website!

Contents

SINGLE-AISLE AIRCRAFT LISTINGS	2
TWIN-AISLE AIRCRAFT LISTINGS	6
ROTORCRAFT LISTINGS	9
ENGINE LISTINGS.....	9
ENGINE STAND LISTINGS.....	17
APU LISTINGS	19
LANDING GEAR LISTINGS	22
NACELLE LISTINGS.....	24
MISCELLANEOUS LISTINGS.....	25
SUBSCRIPTION INFORMATION.....	26

OEM CERTIFIED APU STANDS

131-9A & 131-9B IN STOCK



OEM EQUIVALENT ENGINE STANDS

NextGenAerosupport.com

+1-623-215-3675

SINGLE-AISLE AIRCRAFT LISTINGS

Model	Requirement	Config/Tech Information	Contact Details
A220-300	Available for Sale Built: 2019	Current LOPA – 145Y MTOW - 147,000 lbs/66,678 kgs Registered Country - Bermuda, Location - Europe TSN(k)= 19, CSN(k)= 8 Engines: PW1521G-3	IBA Group, Guljar Lehri guljar.lehri@iba.aero +44.78.2795.3247
A220-300	Available for Sale Built: 2019	Current LOPA – 145Y MTOW - 147,000 lbs/66,678 kgs Registered Country - Bermuda, Location - Europe TSN(k)= 19, CSN(k)= 8 Engines: PW1521G-3	IBA Group, Guljar Lehri guljar.lehri@iba.aero +44.78.2795.3247
A220-300	Available for Sale Built: 2019	Current LOPA – 145Y MTOW - 147,000 lbs/66,678 kgs Registered Country - Bermuda, Location - Europe TSN(k)= 14, CSN(k)= 7 Engines: PW1521G-3	IBA Group, Guljar Lehri guljar.lehri@iba.aero +44.78.2795.3247




A220-300	Available for Sale Built: 2019	Current LOPA – 145Y MTOW - 147,000 lbs/66,678 kgs Registered Country - Bermuda, Location - Europe TSN(k)= 14, CSN(k)= 5 Engines: PW1521G-3	IBA Group, Guljar Lehri guljar.lehri@iba.aero +44.78.2795.3247
----------	-----------------------------------	---	--

Model	Requirement	Config/Tech Information	Contact Details
A220-300	Available for Sale Built: 2019	Current LOPA – 145Y MTOW - 147,000 lbs/66,678 kgs Registered Country - Bermuda, Location - Europe TSN(k)= 14, CSN(k)= 6 Engines: PW1521G-3	IBA Group, Guljar Lehri guljar.lehri@iba.aero +44.78.2795.3247
A319-111	Available for Sale Built: 2010	Current LOPA – 156Y MTOW – 141,095 lbs/ 64,000 kgs TSN(k)= 32.3, CSN(k)= 18.4 Engines: CFM56-5B5/3	IBA Group, Guljar Lehri guljar.lehri@iba.aero +44.78.2795.3247
A319-111	Available for Sale Built: 2010	Current LOPA – 156Y MTOW – 141,095 lbs/ 64,000 kgs TSN(k)= 32.3, CSN(k)= 19.1 Engines: CFM56-5B5/3	IBA Group, Guljar Lehri guljar.lehri@iba.aero +44.78.2795.3247
A319-111	Available for Sale Built: 2010	Current LOPA – 156Y MTOW – 141,095 lbs/ 64,000 kgs TSN(k)= 31.7, CSN(k)= 18.3 Engines: CFM56-5B5/3	IBA Group, Guljar Lehri guljar.lehri@iba.aero +44.78.2795.3247
A319-112	Available for Sale or Dry Lease MSN: 3790 Built: 2009	Single class 141 configuration CFM56-5B6/3 powered. Availability: Q1/2025. (new listing)	Deucalion Aviation, Jonathan Louch aircraft@deucalion.com + 44207.1268.201
A319-112	Available for Sale Built: 2006	Current LOPA – 12J 108Y MTOW – 154,323 lbs/ 70,000 kgs TSN(k)= 39.7, CSN(k)= 27.7 Engines: CFM56-5B5/3	IBA Group, Guljar Lehri guljar.lehri@iba.aero +44.78.2795.3247
A320	Wanted	Airframe vintage serial from 1.000 to 2.000	JMB Aviation, Julio Marquez julio_marquez@jmbaviationgroup.com +1.786.200.7389
A320-200 (2)	Available for Wet Lease MSN: 2457, 2987 Built: 2005/06	180Y PAX. Engines: V2527-A5	Zela Aviation, Matthew Pascoe matthew@zelaaviation.com +44.77.2510.1335
A320-211	Available for Sale MSN: 290	Airframe Only - for Partout	Mojave Jet, Eric Haymes eric.haymes@mojavejet.com +1.310.623.2032
A321-271NX	Available for Sale or Dry Lease MSN: 8710 Built: 2019	Single class 222 configuration PW1133G-JM powered. Availability: Q2/2025.	Deucalion Aviation, Jonathan Louch aircraft@deucalion.com + 44207.1268.201
A321-271NX	Available for Sale or Dry Lease MSN: 8952 Built: 2019	Single class 222 configuration PW1133G-JM powered. Availability: Q4/2025.	Deucalion Aviation, Jonathan Louch aircraft@deucalion.com + 44207.1268.201
A321-271NX	Available for Sale or Dry Lease MSN: 8768 Built: 2019	Single class 222 configuration PW1133G-JM powered. Availability: Q2/2025.	Deucalion Aviation, Jonathan Louch aircraft@deucalion.com + 44207.1268.201

Model	Requirement	Config/Tech Information	Contact Details
B727-200F	Available for Lease MSN: 22992 Built: 1982	FREIGHTER Engines: JT8D-15	Logistic Air, Leasing Department leasing@logisticair.com +1.925.639.9292
B737-200	Available for Sale MSN: 23796 Built: 1987	FREIGHTER TSN(k)= 37.5, CSN(k)= 53.4 Engines: PW JT8D-15/A	Potomac Aviation, Michael Wayshner info@potomacaviation.net +1.703.414.7875
B737-200	Available for Sale MSN: 20917 Built: 1974	FREIGHTER TSN(k)= 70.9, CSN(k)= 65.6 Engines: PW JT8D	Potomac Aviation, Michael Wayshner info@potomacaviation.net +1.703.414.7875
B737-300	Available for Sale MSN: 28329 Built: 1997	Engines: CFM56-B2	AeroACQ Partners LLC, Nicholas Schmidt sales@aeroacq.com +1.203.948.6828
B737-300	Wanted for Purchase	In VIP or Pax configuration	Sideral Linhas Aereas, Christian Pegoraro fa@siderallinhasaereas.com.br +55.41.3116.9060
B737-300QC	Available for Sale or Lease MSN: 25426 Built: 1991	Flying/Operating	Sideral Linhas Aereas, Christian Pegoraro fa@siderallinhasaereas.com.br +55.41.3116.9060
B737-300QC	Available for Sale or Lease MSN: 26851 Built: 1991	Flying/Operating	Sideral Linhas Aereas, Christian Pegoraro fa@siderallinhasaereas.com.br +55.41.3116.9060

Contact Us:
publishing@wingslist.com
or
+1.949.354.4279

PLACE YOUR ADVERTISEMENT HERE OR
ANYWHERE WITHIN THE LISTINGS!



WINGSLIST.COM

your aircraft, engine, and accessory
trading publication

B737-300SF	Available for Sale or Lease MSN: 24022 Built: 1989	Flying/Operating	Sideral Linhas Aereas, Christian Pegoraro fa@siderallinhasaereas.com.br +55.41.3116.9060
B737-500	Available for Sale MSN: 25234 Built: 1993	PAX Engines: CFM56-B2	AeroACQ Partners LLC, Nicholas Schmidt sales@aeroacq.com +1.203.948.6828
B737-500	Wanted for Purchase	In VIP or Pax configuration	Sideral Linhas Aereas, Christian Pegoraro fa@siderallinhasaereas.com.br +55.41.3116.9060
B737-700	Available for Sale or Dry Lease MSN: 30659 Built: 2003	Single class 149 configuration CFM56-7B24 powered. Availability: Q1/2025. (new listing)	Deucalion Aviation, Jonathan Louch aircraft@deucalion.com + 44207.1268.201

Model	Requirement	Config/Tech Information	Contact Details
B737-700	Wanted for Purchase	With CFM56-7B22/-B24 or -B26 engines installed	Sideral Linhas Aereas, Christian Pegoraro fa@siderallinhasaereas.com.br +55.41.3116.9060
B737-700	Available for Wet Lease MSN: 32426 Built: 2004	149Y PAX. Engines: CFM56-7B22	Zela Aviation, Matthew Pascoe matthew@zelaaviation.com +44.77.2510.1335
B737-8 MAX	Available for Wet Lease MSN: 43795 Delivered: 2019	12C/150Y PAX Engines: LEAP-1B27	Zela Aviation, Matthew Pascoe matthew@zelaaviation.com +44.77.2510.1335
B737-800	Available for Sale or Dry Lease MSN: 40149 Built: 2013	All economy 189 configuration. Availability: Q3/2025.	Deucalion Aviation, Jonathan Louch aircraft@deucalion.com + 44207.1268.201
B737-800	Available for Sale or Dry Lease MSN: 40148 Built: 2013	All economy 189 configuration. Availability: Q3/2025.	Deucalion Aviation, Jonathan Louch aircraft@deucalion.com + 44207.1268.201



Specialising in:

- **Aircraft Finance**
- **Technical Support**
- **Aircraft Management**
- **Aircraft Sourcing**
- **Aircraft Marketing**
- **Airline/Investor Advice**



Winner – Lease Deal of the Year 2022

+44 1252 844775 • annettew@skytech-aic.com • www.skytech-aic.com

B737-800	Wanted for Purchase	With CFM56-B26 engines installed	Sideral Linhas Aereas, Christian Pegoraro fa@siderallinhasaereas.com.br +55.41.3116.9060
B737-800	Available for ACMI Lease MSN: 32364 Built: 2002	12C+162Y PAX. Engines: CFM56-7B26	Zela Aviation, Matthew Pascoe matthew@zelaaviation.com +44.77.2510.1335
B737-800SF (5)	Available immediately for Sale MSN: 30876, 29040, 28232, 32796, 29916 Built: 2000-2010	FREIGHTER Engines: CFM56-7B26	Blackrock, Bill Kmiotek bill.kmiotek@blackrock.com +1.773.397.6238
B757-200F	Available for Sale MSN: 25042 Built: 1991	Freighter Engines: PW2037 / 37,500 lbs	AeroACQ Partners LLC, Nicholas Schmidt sales@aeroacq.com +1.203.948.6828

Model	Requirement	Config/Tech Information	Contact Details
MD82	Available for Sale or Lease MSN: 49186 Built: 1984	Currently without engines.	Logistic Air, Leasing Department leasing@logisticair.com +1.925.639.9292

TWIN-AISLE AIRCRAFT LISTINGS

Model	Requirement	Config/Tech Information	Contact Details
A300 B4	Available for Sale MSN: 264 Built: 1983	Engines: CF6-50-C2	JMB Aviation, Julio Marquez julio_marquez@jmbaviationgroup.com +1.786.200.7389
A300 B4	Available for Sale MSN: 274 Built: 1983	Engines: CF6-50-C2	JMB Aviation, Julio Marquez julio_marquez@jmbaviationgroup.com +1.786.200.7389
A330-200	Available for ACMI / OL MSN: 489 Built: 2002	PAX config – 12J and 283Y Engines: CF6-80E1A3	AELF FlightService, Joe Cirillo jcirillo@aelfinc.com +1.708.752.1611



MARIZA BROWNING
mariza.browning@jetmidwest.com
816-877-2449



FOR SALE OR LEASE
B767-200ER
Engines: JT9D-7R4E

A330-200	Available for Sale MSN: 409 Built: 2001	Delivered fresh from C check Engines: RB211 Trent 700	Airstream International, Nick Holmes nick@airstream.aero +44.77.3333.5737
B747-100SF	Available for Lease MSN: 20109 Built: 1970	FREIGHTER MTOW(Klb/t)=750 / 340.1 Engines: JT9D-7A	Logistic Air, Leasing Department leasing@logisticair.com +1.925.639.9292
B747-100SF	Available for Lease MSN: 19650 Built: 1970	FREIGHTER MTOW(Klb/t)=750 / 340.1 Engines: JT9D-7A	Logistic Air, Leasing Department leasing@logisticair.com +1.925.639.9292
B747-2308	Available for Lease MSN: 20527 Built: 1972	476 PAX. Engines: JT9D-7A	Logistic Air, Leasing Department leasing@logisticair.com +1.925.639.9292

Model	Requirement	Config/Tech Information	Contact Details
B747-251 F	Available for Lease MSN: 21121 Built: 1975	Freighter with Nose Cargo Door Engines: JT9D-7AH	Logistic Air, Leasing Department leasing@logisticair.com +1.925.639.9292
B747-251 F	Available for Lease MSN: 21122 Built: 1975	Freighter with Nose Cargo Door Engines: JT9D-7AH	Logistic Air, Leasing Department leasing@logisticair.com +1.925.639.9292
B747-400	Available for Sale MSN: 27503 Built: 1995	Freighter Engines: RB211-524 H2-19	AeroACQ Partners LLC, Nicholas Schmidt sales@aeroacq.com +1.203.948.6828
B747-400	Available for Sale MSN: 24975 Built: 1991	Freighter. Nose Loader. Landing gear good until 2030 Engines: PW901A	AeroACQ Partners LLC, Nicholas Schmidt sales@aeroacq.com +1.203.948.6828
B767-200	Available for Sale MSN: 23434 Built: 1987.	Engines: CF6-80A	AeroACQ Partners LLC, Nicholas Schmidt sales@aeroacq.com +1.203.948.6828



**FAA PART 145 HEAVY
MAINTENANCE REPAIR STATION**



NEXTGEN

AVIATION SERVICES

ENGINE REMOVAL AND INSTALLATION
ENGINE PRESERVATION
BORESCOPE INSPECTIONS
ON-WING TROUBLE SHOOTING/RECERTIFICATION
TOP CASE INSPECTION AND REPAIR
LETTER CHECKS REACTIVATION (RTS)
AIRCRAFT MANAGEMENT



Alexander@nextgenaviationservices.com
+1-623-215-3675



nextgenaviationservices.com

B767-200ER	Available for Sale or Lease MSN: 24145 Built: 1988	Engines: JT9D-7R4D	Jet Midwest, Mariza Browning mariza.browning@jetmidwest.com +1.913.706.2517
B767-200F	Available for Sale MSN: 23143 Built: 1985	Freighter. Side door loader. Landing gears good until 2025, 2028, 2033 Engines: CF6-80A	AeroACQ Partners LLC, Nicholas Schmidt sales@aeroacq.com +1.203.948.6828
B777-200ER	Available for Sale MSN: 28524 Built: 2001	PAX seats: 30/282/312 Engines: RR Trent 892B	BCA Customer Finance, Scott Nicholson scott.nicholson@boeing.com +1.425.241.2852
B777-200ER	Available for Sale or Lease MSN: 32335 Built: 2002	Engines: Trent 800	Jet Midwest, Mariza Browning mariza.browning@jetmidwest.com +1.913.706.2517
B777-200ER	Available for Sale or Lease MSN: 32712 Built: 2006	(new listing) Engines: Trent 895	Jet Midwest, Mariza Browning mariza.browning@jetmidwest.com +1.913.706.2517

Model	Requirement	Config/Tech Information	Contact Details
B777-200ER	Available for Sale or Lease MSN: 32894 Built: 2004	PAX Engines: GE90-94B	Logistic Air, Vandí Cooyar vandi@logisticair.com +1.775.636.7377 ext 101
B777-200ER	Available for Sale or Lease MSN: 32892 Built: 2003	PAX Engines: GE90-94B	Logistic Air, Vandí Cooyar vandi@logisticair.com +1.775.636.7377 ext 101
B777-200ER	Available for Sale or Lease MSN: 32893 Built: 2003	PAX Engines: GE90-94B	Logistic Air, Vandí Cooyar vandi@logisticair.com +1.775.636.7377 ext 101
B777-200ER	Available for Sale or Lease MSN: 33394 Built: 2003	42C+40W+154Y PAX. Engines: GE90-94B	Logistic Air, Leasing Department leasing@logisticair.com +1.925.639.9292
B777-200ER	Available for Sale or Lease MSN: 32895 Built: 2004	PAX Engines: GE90-94B	Logistic Air, Vandí Cooyar vandi@logisticair.com +1.775.636.7377 ext 101
B777-300	Available for Sale or Lease MSN: 29395 Built: 2001	Engines: Trent 892	Jet Midwest, Mariza Browning mariza.browning@jetmidwest.com +1.913.706.2517
B777-300	Available for Sale or Lease MSN: 30868 Built: 2001	Engines: Trent 800	Jet Midwest, Mariza Browning mariza.browning@jetmidwest.com +1.913.706.2517
B777-300ER	Available for Lease MSN: 21947 Built: 2013	TSN(k)=26.0 CSN(k)=3.7 Engines: GE90-115BL	Sgi Aviation, Ted van Zundert tvzundert@sgaviation.com +31.6.1515.0095

ROTORCRAFT LISTINGS

Model	Requirement	Config/Tech Information	Contact Details
Airbus SA330J Puma	Available for Sale MSN: 14748 Built: 1977	Utility/Troop. New Zealand. Registration N815AR	SkyQuest International, Jeff Melang jeff@skyquestinternational.com +1.336.722.1616
Bell 412SP	Available for Sale MSN: 36019 Built: 1990	Cargo/Utility Engines: P&W PT6 SERIES	SkyQuest International, Jeff Melang jeff@skyquestinternational.com +1.336.722.1616
Sikorsky UH-60A Black Hawk	Available for Sale MSN: 78-23004 Built: 1978	Customizable Mission ready. Restricted Category Type Certificate. Over 720 hours remaining on dynamic components. Exterior Fresh Paing. Chino, CA (USA) Engines: Sundstrand, 116305-302	SkyQuest International, Jeff Melang jeff@skyquestinternational.com +1.336.722.1616
Sikorsky UH-60A Black Hawk	Available for Parts MSN: 79-23326 Built: 1979	Not installed: Bifilar weights, Left Landing Gear, Center Console Components, Right Junction Box, Left Junction Box, Right AC/DC Cover, Right Side Cargo Door Latch. Chino, CA (USA) Engines: TBO L/H 7272 / R/H 5825	SkyQuest International, Jeff Melang jeff@skyquestinternational.com +1.336.722.1616

ENGINE LISTINGS

Model	Requirement	Config/Tech Information	Contact Details
AE3007	Available for Immediate Sale ESN: CAE312854	Serviceable	Skyworld Aviation, Juliet Hewitt juliet@skyworld.co.uk +44.1753.832088
ALF502	Available for Sale Multiple ESNs	Serviceable. Mid time engines. Located UK	Executive Jet Support, Marc Browse marc@ejs.aero +44.1249.464757
ALF507	Available for Sale Multiple ESNs	Serviceable. Mid time engines. Located UK	Executive Jet Support, Marc Browse marc@ejs.aero +44.1249.464757
CF34-10E	Available for Sale or Lease or Exchange ESN: 994165		Beautech, Tobias Neumann tobias.neumann@beautech.aero +49.151.1742.2732
CF34-3B1	Available for Sale ESN: 872768		Beautech, Brian Ceelen brian.ceelen@beautech.aero +1.917.403.5838

Model	Requirement	Config/Tech Information	Contact Details
CF34-3B1	Available for Sale ESN: 872942	(new listing)	Beautech, Brian Ceelen brian.ceelen@beautech.aero +1.917.403.5838
CF34-3B1	Available for Sale ESN: 872987	(new listing)	Beautech, Brian Ceelen brian.ceelen@beautech.aero +1.917.403.5838
CF34-3B1	Available for Sale ESN: 873276		Beautech, Brian Ceelen brian.ceelen@beautech.aero +1.917.403.5838
CF34-3B1	Available for Sale ESN: 872044		Beautech, Brian Ceelen brian.ceelen@beautech.aero +1.917.403.5838



WE SPEAK ENGINES

AIR
AVIATION TURBINE REPAIR

CFM56-3/5/7B
JT8D-1/17AR - 200
CF6-80

ATRMRO.COM INFO@ATRMRO.COM 305.702.2771

CF34-3B1	Available for Sale ESN: 873470	TSN(k)=39.9 CSN(k)=36.7	Jetcraft, Nick Mossa info@jetcraft.com +1.919.941.8400
CF34-3B1	Available for Sale ESN: 873071	TSN(k)=35.9 CSN(k)=33.6	Jetcraft, Nick Mossa info@jetcraft.com +1.919.941.8400
CF34-8C5	Available for Sale or Lease Q324 ESN: 194977	0 TSLSV with fresh HPT, 6700 cyc. 1st limiter	ASI Aero, Dean Morgan deanm@asiaero.net +561.771.4253
CF34-8C5A1	Available for Sale ESN: 194592	TSN(k)=21.8 CSN(k)=20.5	Jetcraft, Nick Mossa info@jetcraft.com +1.919.941.8400
CF34-8C5A1	Available for Sale ESN: 195243	TSN(k)=12.1 CSN(k)=12.4	Jetcraft, Nick Mossa info@jetcraft.com +1.919.941.8400
CF34-8C5A1	Available for Sale ESN: 965413	TSN(k)=26.1 CSN(k)=25.4	Jetcraft, Nick Mossa info@jetcraft.com +1.919.941.8400
CF34-8C5A1	Available for Sale ESN: 195163	TSN(k)=14.3 CSN(k)=15.0	Jetcraft, Nick Mossa info@jetcraft.com +1.919.941.8400
CF34-8E5	Available for Sale or Lease or Exchange (as of 11/2024) ESN: 193840		Beautech, Tobias Neumann tobias.neumann@beautech.aero +49.151.1742.2732

Model	Requirement	Config/Tech Information	Contact Details
CF34-8E5	Available for Sale or Lease or Exchange ESN: 193954		Beautech, Chris Arras chris.arras@beautech.aero +1.469.644.6970
CF6-50 C2 (5)	Available for Sale ESN: 455444, 455822, 528102		JMB Aviation, Julio Marquez julio_marquez@jmbaviationgroup.com +1.786.200.7389
CF6-80C2	Wanted	In SVC or any condition	Mojave Jet, Eric Haymes eric.haymes@mojavejet.com +1.310.623.2032
CF6-80C2B6	Available for Sale or Lease ESN: 695634	Serviceable	AELF FlightService, Steve Haire shaire@aelfinc.com +1.312.772.1613
CF6-80E1A	Available Immediately for Lease		AELF FlightService, Steve Haire shaire@aelfinc.com +1.312.772.1613
CFM56-3B2	Available for Sale ESN: 725225	LLP & PR. Full QEC	ZGA Sales, Roberto Zotti sales@zgasales.com +1.305.592.1753
CFM56-3C1	Available for Sale ESN: 856428		AeroACQ Partners LLC, Nicholas Schmidt sales@aeroacq.com +1.203.948.6828
CFM56-3C1	Available for Sale ESN: 860262		AeroACQ Partners LLC, Nicholas Schmidt sales@aeroacq.com +1.203.948.6828
CFM56-3C1	Available for Sale ESN: 858729		AeroACQ Partners LLC, Nicholas Schmidt sales@aeroacq.com +1.203.948.6828
CFM56-3C1	Available for Sale ESN: 858643		AeroACQ Partners LLC, Nicholas Schmidt sales@aeroacq.com +1.203.948.6828
CFM56-3C1	Available for Sale SN: 858416	2700 CR min	Aviation Turbine Repair, Kris Palacios Kpalacios@atrmro.com +1.786.299.7791
CFM56-3C1	Available for purchase ESN: 725279	7,444 CR, Partial QEC, EGT 48C @3C1	Jet Engine Technology, Alejandro Reyes-Gutierrez areyes@jetc.info +1.786.486.3321
CFM56-3C1	Available for Sale ESN: 727427	LLP & PR. Full QEC	ZGA Sales, Roberto Zotti sales@zgasales.com +1.305.592.1753
CFM56-5A	Wanted	In SVC or any condition	Mojave Jet, Eric Haymes eric.haymes@mojavejet.com +1.310.623.2032
CFM56-5A (2)	Available for Sale ESN: 731454, 731680	For Partout	Mojave Jet, Eric Haymes eric.haymes@mojavejet.com +1.310.623.2032
CFM56-5B/-7B, V2500, Leap, GTF	Wanted	With lease attached with a tier 1 operator	SGI Aviation, Ted van Zundert tvzundert@sgiaviation.com +31.6.1515.0095

Model	Requirement	Config/Tech Information	Contact Details
CFM56-5B4/3	Available for Sale or Long-Term Lease ESN: 645259	Serviceable with 14,000 Remaining Cycles	Aeronautics Fund, Jerome Guichard jg@afd.aero +971.5.8259.0901
CFM56-5B4/3	2 Engines Wanted	fresh from shop with shop warranty	Avia Quest Ltd., Brad Vineyard brad@aviaquestltd.com +1.630.862.8989
CFM56-5B4/P	Available for Sale or Lease or Exchange (as of 01/2025) ESN: 577424		Beautech, Tobias Neumann tobias.neumann@beautech.aero +49.151.1742.2732
CFM56-5B4/P	Available for Sale or Lease or Exchange (as of 01/2025) ESN: 779632		Beautech, Tobias Neumann tobias.neumann@beautech.aero +49.151.1742.2732
CFM56-5B4/P	Available for Lease ESN: 575448	With Full QEC Europe	FTAI Aviation, Mark Napoles mnapoles@ftaaviation.com +1.786.785.0777
CFM56-5B4/P	Available for Lease ESN: 577642	With Full QEC USA	FTAI Aviation, Mark Napoles mnapoles@ftaaviation.com +1.786.785.0777
CFM56-5B4/P	Available for Lease ESN: 577836	With Full QEC Dublin	FTAI Aviation, Mark Napoles mnapoles@ftaaviation.com +1.786.785.0777
CFM56-5B4/P	Available for Lease ESN: 577620	With Full QEC	Hanwha Aviation, Nick Ha nick.ha@hanwha-aviation.com +82.10.6440.3840
CFM56-5B5/P	Available for Sale or Lease or Exchange ESN: 779861	TFH/TFC: 43k/28k	BBAM, Steve Zissis info@bbam.com +1.787.665.7039
CFM56-5B5/P	Available for Sale or Lease or Exchange ESN: 779866	TFH/TFC: 43k/28k	BBAM, Steve Zissis info@bbam.com +1.787.665.7039
CFM56-5B5/P	Available for Sale or Lease or Exchange ESN: 779672	TFH/TFC: 42k/41k	BBAM, Steve Zissis info@bbam.com +1.787.665.7039
CFM56-5B6/3	Available for Sale or Lease ESN: 699 220	Located in Europe. Available Q1/25	Deucalion Aviation, Jonathan Louch engines@deucalion.com + 44207.1268.201
CFM56-5B6/3	Available for Sale or Lease ESN: 699 219	Located in Europe. Available Q1/25	Deucalion Aviation, Jonathan Louch engines@deucalion.com + 44207.1268.201
CFM56-5B6/3	Available for Sale or Lease ESN: 699844		GA Telesis, Chris Nye cnye@gatelesis.com +1.954.676.3111
CFM56-5B6/P	Available for Lease ESN: 577667	With Full QEC Europe	FTAI Aviation, Mark Napoles mnapoles@ftaaviation.com +1.786.785.0777

Model	Requirement	Config/Tech Information	Contact Details
CFM56-5B7	Available for Sale ESN:		Mojave Jet, Eric Haymes eric.haymes@mojavejet.com +1.310.623.2032
CFM56-7B (2)	Available for Sale ESN:		Mojave Jet, Eric Haymes eric.haymes@mojavejet.com +1.310.623.2032
CFM56-7B22 (2)	Wanted for Purchase		Sideral Linhas Aereas, Christian Pegoraro fa@siderallinhasaereas.com.br +55.41.3116.9060
CFM56-7B24	Available for Sale or Lease or Exchange ESN: 891902	TFH/TFC: 50k/31k	BBAM, Steve Zissis info@bbam.com +1.787.665.7039
CFM56-7B24	Available for Sale or Lease or Exchange ESN: 890423	TFH/TFC: 48k/31k	BBAM, Steve Zissis info@bbam.com +1.787.665.7039
CFM56-7B24 (2)	Wanted for Purchase		Sideral Linhas Aereas, Christian Pegoraro fa@siderallinhasaereas.com.br +55.41.3116.9060
CFM56-7B26	Available immediately for Sale or Lease ESN: 876292	QEC`d serv engines, LTR 4,253 cy rem	Blackrock, Bill Kmiotek bill.kmiotek@blackrock.com +1.773.397.6238
CFM56-7B26	Available immediately for Sale or Lease ESN: 888804	QEC`d serv engines, LTR 4,518 cy rem	Blackrock, Bill Kmiotek bill.kmiotek@blackrock.com +1.773.397.6238
CFM56-7B26 (4)	Wanted for Purchase		Sideral Linhas Aereas, Christian Pegoraro fa@siderallinhasaereas.com.br +55.41.3116.9060
CFM56-7B26/3	Available for Lease ESN: 892197	TFH/TFC: 25k/15k	BBAM, Steve Zissis info@bbam.com +1.787.665.7039
CFM56-7B26/3	Available for purchase ESN: 894893	Tech Insert, 9,944 CR, Partial QEC. Performance Restoration.	Jet Engine Technology, Alejandro Reyes-Gutierrez areyes@jetc.info +1.786.486.3321
GE90-94B	Available for Sale ESN: 900-411		Logistic Air, Vandi Cooyar vandi@logisticair.com +1.775.636.7377 ext 101
GE90-94B	Available for Sale ESN: 900-399		Logistic Air, Vandi Cooyar vandi@logisticair.com +1.775.636.7377 ext 101
GENx-2B67/P	Available for Sale or Lease ESN: 959470	Available December 2024 (new listing)	BCA Customer Finance, Scott Nicholson scott.nicholson@boeing.com +1.425.241.2852
GENx-2B67/P	Available for Sale or Lease ESN: 959469	Available December 2024 (new listing)	BCA Customer Finance, Scott Nicholson scott.nicholson@boeing.com +1.425.241.2852
GENx-2B67/P	Available for Sale or Lease ESN: 959450	Available December 2024 (new listing)	BCA Customer Finance, Scott Nicholson scott.nicholson@boeing.com +1.425.241.2852

Model	Requirement	Config/Tech Information	Contact Details
JT8D-15	Available for Sale ESN: On request		Logistic Air, Vandí Cooyar vandi@logisticair.com +1.775.636.7377 ext 101
JT8D-217	Available for Sale ESN:	LLP Available. FOB Miami.	ZGA Sales, Roberto Zotti sales@zgasales.com +1.305.592.1753
JT8D-219	Available for Sale ESN: 725802		AeroACQ Partners LLC, Nicholas Schmidt sales@aeroacq.com +1.203.948.6828
JT8D-219	Available for Sale ESN: 725993		AeroACQ Partners LLC, Nicholas Schmidt sales@aeroacq.com +1.203.948.6828
JT8D-219	Available for Sale ESN: 709829		AeroACQ Partners LLC, Nicholas Schmidt sales@aeroacq.com +1.203.948.6828
JT8D-219	Available for Sale ESN: 709936		AeroACQ Partners LLC, Nicholas Schmidt sales@aeroacq.com +1.203.948.6828
			
JT8D-219	Available for Sale ESN: 725722		AeroACQ Partners LLC, Nicholas Schmidt sales@aeroacq.com +1.203.948.6828
JT8D-219	Available for Sale ESN: 717301		AeroACQ Partners LLC, Nicholas Schmidt sales@aeroacq.com +1.203.948.6828
JT8D-219	Available for Sale ESN: 725703		AeroACQ Partners LLC, Nicholas Schmidt sales@aeroacq.com +1.203.948.6828
JT8D-219	Available for Sale ESN: 725387		AeroACQ Partners LLC, Nicholas Schmidt sales@aeroacq.com +1.203.948.6828
JT8D-219	Available for Sale ESN: 718552		AeroACQ Partners LLC, Nicholas Schmidt sales@aeroacq.com +1.203.948.6828
JT8D-219	Available for Sale ESN: 726072		AeroACQ Partners LLC, Nicholas Schmidt sales@aeroacq.com +1.203.948.6828

Contact Us:
publishing@wingslist.com
 or
+1.949.354.4279

**PLACE YOUR ADVERTISEMENT HERE OR
 ANYWHERE WITHIN THE LISTINGS!**



WINGSLIST.COM

*your aircraft, engine, and accessory
 trading publication*

Model	Requirement	Config/Tech Information	Contact Details
JT8D-219	Available for Sale ESN: 709919		AeroACQ Partners LLC, Nicholas Schmidt sales@aeroacq.com +1.203.948.6828
JT8D-219	Available for Sale ESN: 725731		AeroACQ Partners LLC, Nicholas Schmidt sales@aeroacq.com +1.203.948.6828
JT8D-9A	Available for Sale ESN: On request		Logistic Air, Vandi Cooyar vandi@logisticair.com +1.775.636.7377 ext 101
JT9D-7AH	Available for Sale ESN: 662921		Logistic Air, Vandi Cooyar vandi@logisticair.com +1.775.636.7377 ext 101
JT9D-7AH	Available for Sale ESN: 685861		Logistic Air, Vandi Cooyar vandi@logisticair.com +1.775.636.7377 ext 101
JT9D-7AH	Available for Sale ESN: 695720		Logistic Air, Vandi Cooyar vandi@logisticair.com +1.775.636.7377 ext 101
JT9D-7AH	Available for Sale ESN: 662850		Logistic Air, Vandi Cooyar vandi@logisticair.com +1.775.636.7377 ext 101
PW127F (BS918)	Available for Sale, Lease, or Exchange ESN: 129006		Willis Lease, Dave Desaulniers ddesaulniers@willislease.com +1.415.516.4837 (End Users and mandated brokers only)
PW127M	Available Soon for Sale, Lease, or Exchange ESN: AM0115		Willis Lease, Dave Desaulniers ddesaulniers@willislease.com +1.415.516.4837 (End Users and mandated brokers only)
PW127M (multiple)	Available for Sale or Lease ESN: ED0715, ED0718,ED0734,ED0735, ED0964, ED0965		Willis Lease, Dave Desaulniers ddesaulniers@willislease.com +1.415.516.4837 (End Users and mandated brokers only)
PW150	Available for Sale Multiple ESNs	Serviceable, located in Europe	Executive Jet Support, Will Davis william@ejs.aero +44.1249.464757
PW150A	Wanted for lease 3-6 months	QAR equipped, EFB, approx.. 4000engine cycle limiter, ADS-B compliant if available.	Zela Aviation, Evangelos Ignatiou evangelos@zelaaviation.com +30 210 9636802
PW4000-94	Wanted	In SVC or any condition	Mojave Jet, Eric Haymes eric.haymes@mojavejet.com +1.310.623.2032
PW4074	Available for Sale or Lease ESN: 777078	Serviceable	Jet Midwest, Mariza Browning mariza.browning@jetmidwest.com +1.913.706.2517
PW4168A	Available for Sale or Lease ESN: 733462		GA Telesis, Chris Nye cny@gatelesis.com +1.954.676.3111

Model	Requirement	Config/Tech Information	Contact Details
PW4168A	Available for Sale or Lease ESN: 733460		GA Telesis, Chris Nye cnye@gatelesis.com +1.954.676.3111
RB211-535E4	Available immediately for Sale or Lease ESN: 30723	complete with QEC, 3697 cy rem on lowest limiter. FOB Goodyear, AZ.	Blackrock, Bill Kmiotek bill.kmiotek@blackrock.com +1.773.397.6238
RB211-535E4B	Available immediately for Sale ESN: 31721	QEC with recent level 2.5 completed at Iberia	Blackrock, Bill Kmiotek bill.kmiotek@blackrock.com +1.773.397.6238
Rolls Royce Tay 611-8	Available for Sale ESN: 16165	Midlife good thru 2028	Mojave Jet, Eric Haymes eric.haymes@mojavejet.com +1.310.623.2032
Rolls Royce Tay 611-8	Available for Sale ESN: 16166	Midlife good thru 2028	Mojave Jet, Eric Haymes eric.haymes@mojavejet.com +1.310.623.2032
TFE731-3CR-3B	Available for Sale ESN: P-85277C, P-85266C		JMB Aviation, Julio Marquez julio_marquez@jmbaviationgroup.com +1.786.200.7389
TFE731-AR-2B	Available for Sale ESN: P-85257C, P-85224, P-94162, P-85173C		JMB Aviation, Julio Marquez julio_marquez@jmbaviationgroup.com +1.786.200.7389
Trent 800	Available for Sale or Lease Multiple		Jet Midwest, Mariza Browning mariza.browning@jetmidwest.com +1.913.706.2517
TRENT 884	Available for Sale or Lease ESN: 51091	Available December 2024 (new listing)	BCA Customer Finance, Scott Nicholson scott.nicholson@boeing.com +1.425.241.2852
TRENT 884	Available for Sale or Lease ESN: 51349	Available December 2024 (new listing)	BCA Customer Finance, Scott Nicholson scott.nicholson@boeing.com +1.425.241.2852
TRENT 892	Available for Sale or Lease ESN: 51132	Available December 2024 (new listing)	BCA Customer Finance, Scott Nicholson scott.nicholson@boeing.com +1.425.241.2852
TRENT 892	Available for Sale or Lease ESN: 51080	Available December 2024 (new listing)	BCA Customer Finance, Scott Nicholson scott.nicholson@boeing.com +1.425.241.2852
TRENT 892	Available for Sale or Lease ESN: 51180	Available December 2024 (new listing)	BCA Customer Finance, Scott Nicholson scott.nicholson@boeing.com +1.425.241.2852
TRENT 892	Available for Sale or Lease ESN: 51415	Available December 2024 (new listing)	BCA Customer Finance, Scott Nicholson scott.nicholson@boeing.com +1.425.241.2852
Trent 900	Available for Sale or Lease Multiple	Serviceable	Jet Midwest, Mariza Browning mariza.browning@jetmidwest.com +1.913.706.2517
V2500-A5 (V2527M-A5)	Available for Sale ESN:		Mojave Jet, Eric Haymes eric.haymes@mojavejet.com +1.310.623.2032

Model	Requirement	Config/Tech Information	Contact Details
V2527-A5	Available for Lease ESN: V10753		GA Telesis, Chris Nye cnye@gatelesis.com +1.954.676.3111
V2527-A5	Available for Lease ESN: V10752		GA Telesis, Chris Nye cnye@gatelesis.com +1.954.676.3111

ENGINE STAND LISTINGS

Model	Requirement	Config/Tech Information	Contact Details
AE3007 Engine Stand	Available for Sale or Rental		Skyworld Aviation, Oliver Portwood oliver@skyworld.co.uk +44.1753.832088
CF34-10E Engine Stand	Available for Lease Cradle PN: AGSE-E094-G03 Base PN: AGSE-E169-G02	OEM approved (AGSE) Location: Amsterdam & Miami	Magnetic Group, Dainius Marciulionis Dainius.Marciulionis@magneticgroup.co +370 686 18734
CF34-8C Engine Stand	Available for Lease Cradle PN: AGSE-E120-G01	OEM approved (AGSE) Location: Amsterdam & Tallinn	Magnetic Group, Dainius Marciulionis Dainius.Marciulionis@magneticgroup.co +370 686 18734
CF34-8E Engine Stand	Available for Lease Cradle PN: 2C81052G01 Base PN: 2C81051G03	OEM approved (AGSE) Location: Amsterdam	Magnetic Group, Dainius Marciulionis Dainius.Marciulionis@magneticgroup.co +370 686 18734
CF6-80C2 Engine Stand	Available for Lease Cradle PN: AM-1928-156 Base PN: AM-1928-155	OEM approved (Frank & Brown, AGSE) Location: Amsterdam	Magnetic Group, Dainius Marciulionis Dainius.Marciulionis@magneticgroup.co +370 686 18734
CF6-80E Engine Stand	Available for Lease Cradle PN: AM-1928-156-80E1 Base PN: AM-1928-155	OEM approved (AGSE) Location: Amsterdam	Magnetic Group, Dainius Marciulionis Dainius.Marciulionis@magneticgroup.co +370 686 18734
CFM56-3 Engine Stand	Available for Lease Cradle PN: FB70000-1 Base PN: FB70077-200	OEM approved (Frank & Brown, AGSE) Location: Tallinn	Magnetic Group, Dainius Marciulionis Dainius.Marciulionis@magneticgroup.co +370 686 18734
CFM56-5A/B Engine Stand	Available for Lease Cradle PN: FB70010-1B.REVA Base PN: FB70077-200	OEM approved (Frank & Brown, AGSE) Locations: Amsterdam, Tallinn, Dubai, Miami, Guangzhou, Singapore	Magnetic Group, Dainius Marciulionis Dainius.Marciulionis@magneticgroup.co +370 686 18734
CFM56-5C Engine Stand	Available for Lease Cradle PN: FB70020-100 Base PN: FB70020-200	OEM approved (Frank & Brown) Location: Amsterdam	Magnetic Group, Dainius Marciulionis Dainius.Marciulionis@magneticgroup.co +370 686 18734
CFM56-7B Engine Stand	Available for Lease Cradle PN: FB70077-100ISSB Base PN: FB70077-200	OEM approved (Frank & Brown, AGSE) Location: Amsterdam, Tallinn, Dubai, Miami, Guangzhou, Singapore	Magnetic Group, Dainius Marciulionis Dainius.Marciulionis@magneticgroup.co +370 686 18734

Model	Requirement	Config/Tech Information	Contact Details
GTCP131-9A APU Stand	Available for Lease Cradle PN: 58265221	OEM approved (Honeywell) Location: Amsterdam	Magnetic Group, Dainius Marciulionis Dainius.Marciulionis@magneticgroup.co +370 686 18734
GTCP131-9A APU Stand	Available for Sale SN 111, 112, 113 NGBAP1319A	Manufacturer: NextGen. OEM LICENSED APU STAND	Nextgen Aerosupport, Alexander McKean alexander@nextgenaerosupport.com +1.623.215.4504
GTCP131-9B APU Stand	Available for Lease Cradle PN: 1319B	Location: Amsterdam	Magnetic Group, Dainius Marciulionis Dainius.Marciulionis@magneticgroup.co +370 686 18734
GTCP131-9B APU Stand	Available for Sale SN 107, 108, 109 NGBAP1319B	Manufacturer: NextGen. OEM LICENSED APU STAND	Nextgen Aerosupport, Alexander McKean alexander@nextgenaerosupport.com +1.623.215.4504
			
GTCP131-9C APU Stand	Available for Sale SN 102 NGBAP1319C	Manufacturer: NextGen. OEM LICENSED APU STAND	Nextgen Aerosupport, Alexander McKean alexander@nextgenaerosupport.com +1.623.215.4504
GTCP331-500 APU Stand	Available for Sale SN 102, 103 NGBAP331500	Manufacturer: NextGen. OEM LICENSED APU STAND	Nextgen Aerosupport, Alexander McKean alexander@nextgenaerosupport.com +1.623.215.4504
LEAP-1A Engine Stand	Available for Lease Cradle PN: 956A7644G02	OEM approved (Rhinestahl) Location: Amsterdam	Magnetic Group, Dainius Marciulionis Dainius.Marciulionis@magneticgroup.co +370 686 18734
LEAP-1B Engine Stand	Available for Lease Cradle PN: 956A8600G02	OEM approved (Rhinestahl, Dedienne) Location: Amsterdam, Singapore	Magnetic Group, Dainius Marciulionis Dainius.Marciulionis@magneticgroup.co +370 686 18734
PW1100 Engine Stand	Available for Lease Cradle PN: PWA211430	OEM approved (AGSE) Location: Amsterdam, Singapore, Miami, Dubai, Tallinn	Magnetic Group, Dainius Marciulionis Dainius.Marciulionis@magneticgroup.co +370 686 18734
PW127 Engine Stand	Available for Lease Cradle PN: PK5080	OEM approved (Pratt & Whitney) Location: Amsterdam	Magnetic Group, Dainius Marciulionis Dainius.Marciulionis@magneticgroup.co +370 686 18734
PW4000-100 Engine Stand (2)	Available for Sale SN 111, 112 NGPW4100	Manufacturer: NextGen.	Nextgen Aerosupport, Alexander McKean alexander@nextgenaerosupport.com +1.623.215.4504

Model	Requirement	Config/Tech Information	Contact Details
PW4000-94 Engine Stand	Available for Lease Cradle PN: AM-2371-1000 Base PN: AM-2372	OEM approved (AGSE) Location: Amsterdam	Magnetic Group, Dainius Marciulionis Dainius.Marciulionis@magneticgroup.co +370 686 18734
PW4000-94 Engine Stand	Available for Sale SN 102 NGPW494H	Manufacturer: NextGen.	Nextgen Aerosupport, Alexander McKean alexander@nextgenaerosupport.com +1.623.215.4504
RB211-524 Sling	Available for Sale SN 102 NGRB524SL	Manufacturer: NextGen.	Nextgen Aerosupport, Alexander McKean alexander@nextgenaerosupport.com +1.623.215.4504
RE220 APU Stand	Available for Sale SN 103, 104 NGBAP220	Manufacturer: NextGen. OEM LICENSED APU STAND	Nextgen Aerosupport, Alexander McKean alexander@nextgenaerosupport.com +1.623.215.4504
Trent 800 Shop Dolly	Available for Sale SN 102 NGT8SD100	Manufacturer: NextGen.	Nextgen Aerosupport, Alexander McKean alexander@nextgenaerosupport.com +1.623.215.4504
Trent 800 Sling	Available for Sale SN 107 NGT8T200	Manufacturer: NextGen.	Nextgen Aerosupport, Alexander McKean alexander@nextgenaerosupport.com +1.623.215.4504
Trent 800 Sling	Available for Sale SN 102 NGT8TRR100	Manufacturer: NextGen.	Nextgen Aerosupport, Alexander McKean alexander@nextgenaerosupport.com +1.623.215.4504
Trent500/700 Engine Stand	Available for Lease Cradle PN: AGSE-E082-G09 Base PN: EA AGSE-E079-G02	OEM approved (AGSE) Location: Amsterdam	Magnetic Group, Dainius Marciulionis Dainius.Marciulionis@magneticgroup.co +370 686 18734
Trent700 Engine Stand	Available for Lease Cradle PN: HU55281-4 Base PN: HU55280-3	OEM approved (Hydro) Location: Amsterdam	Magnetic Group, Dainius Marciulionis Dainius.Marciulionis@magneticgroup.co +370 686 18734
V2500 Engine Stand	Available for Lease Cradle PN: D71STA00004G04	OEM approved (Dedienne) Locations: Amsterdam, Tallinn, Dubai, Miami, Guangzhou, Singapore	Magnetic Group, Dainius Marciulionis Dainius.Marciulionis@magneticgroup.co +370 686 18734
V2500 Engine Stand	Available for Sale SN 104 NGV25LT	Manufacturer: NextGen.	Nextgen Aerosupport, Alexander McKean alexander@nextgenaerosupport.com +1.623.215.4504

APU LISTINGS

Model	Requirement	Config/Tech Information	Contact Details
A330 APU 3800454-6	Available for Sale	SV condition, stock Europe	Executive Jet Support, George Jobbins george@ejs.aero +44.1249.464757
APS2000	Available for Sale or Lease		ZGA Sales, Roberto Zotti sales@zgasales.com +1.305.592.1753

Model	Requirement	Config/Tech Information	Contact Details
APS2300 4505001A	Available for Sale HSC-E0623276	Serviceable.	GA Telesis, Jay Meshay apu@gatelesis.com +1.954.849.3509
APS3200 C 4500001C	Available for Sale		GA Telesis, Jay Meshay apu@gatelesis.com +1.954.849.3509
APS3200B 4500001B	Available for Sale SN: 1615, 1321	Serviceable.	GA Telesis, Jay Meshay apu@gatelesis.com +1.954.849.3509
BAE146/RJ APU APS1000 PN 4501690C	Available for Sale SN: SP-E997588	TSN: 15827.1 CSN 33889.0 Fresh from shop visit. Lead time 30 days	Executive Jet Support, Rob McManus rob@ejs.aero +44.1249.464757
GTCP 331-200 3800298-1-2	Available for Sale SN: P-1469	Serviceable.	GA Telesis, Jay Meshay apu@gatelesis.com +1.954.849.3509
GTCP131-9A	Available for Sale SN: R-2569, P-4569, P-4388	Overhauled	GA Telesis, Jay Meshay apu@gatelesis.com +1.954.849.3509
GTCP131-9B 3800702-1	Available for Sale SN: P-6308	Serviceable	GA Telesis, Jay Meshay apu@gatelesis.com +1.954.849.3509
GTCP131-9B	Available for Lease SN: P-5058		Willis Lease, Gavin Connolly gconnolly@willislease.com +44.1656.765.256 (End Users and mandated brokers only)
GTCP131-9B	Available for Lease SN: P-5125	B737 MAX and NG compliant	Willis Lease, Gavin Connolly gconnolly@willislease.com +44.1656.765.256 (End Users and mandated brokers only)
GTCP131-9B 3800702-2 Max Compliant	Available for Sale SN: P-7488	Overhauled	GA Telesis, Jay Meshay apu@gatelesis.com +1.954.849.3509
GTCP131-9B 3800702-2 Max Compliant	Available for Sale SN: P-11539	Serviceable	GA Telesis, Jay Meshay apu@gatelesis.com +1.954.849.3509
GTCP331-350C 3800454-6	Available for Sale SN: P-741, R-485C	Serviceable	GA Telesis, Jay Meshay apu@gatelesis.com +1.954.849.3509
GTCP331-500	Available for Sale or Lease SN: P-2294	01JAN25 available fresh from heavy SV, TFC/TFC 11500/7700	SJI Aviation, Ted van Zundert tvzundert@sgjaviation.com +31.6.1515.0095
GTCP331-500B	Available for Lease	777 APU	Jet Midwest, Rick Tobey apu@jetmidwest.com

Model	Requirement	Config/Tech Information	Contact Details
GTCP331-500B	Available for Sale SN: P-1492		Logistic Air, Vandí Cooyar vandi@logisticair.com +1.775.636.7377 ext 101
GTCP331-500B	Available for Sale SN: P-1063		Logistic Air, Vandí Cooyar vandi@logisticair.com +1.775.636.7377 ext 101
GTCP660-4	Available for Sale SN: P-37778		Logistic Air, Vandí Cooyar vandi@logisticair.com +1.775.636.7377 ext 101
GTCP660-4	Available for Sale SN: P-37867		Logistic Air, Vandí Cooyar vandi@logisticair.com +1.775.636.7377 ext 101
GTCP660-4	Available for Sale SN: P-38061		Logistic Air, Vandí Cooyar vandi@logisticair.com +1.775.636.7377 ext 101
GTCP660-4	Available for Sale SN: P-38228		Logistic Air, Vandí Cooyar vandi@logisticair.com +1.775.636.7377 ext 101
GTCP85-129	Available for Sale SN: P-35371		Logistic Air, Vandí Cooyar vandi@logisticair.com +1.775.636.7377 ext 101
GTCP85-129H	Available for Sale or Lease	Fresh OHC dual tag Full QEC	ZGA Sales, Roberto Zotti sales@zgasales.com +1.305.592.1753
GTCP85-98CK	Available for Sale SN: P-36948		Logistic Air, Vandí Cooyar vandi@logisticair.com +1.775.636.7377 ext 101
GTCP85-98CK	Available for Sale SN: P-36058		Logistic Air, Vandí Cooyar vandi@logisticair.com +1.775.636.7377 ext 101
GTCP85-98D	Available for Sale SN: P-27576		Logistic Air, Vandí Cooyar vandi@logisticair.com +1.775.636.7377 ext 101
GTCP85-98D	Available for Sale SN: P-28196		Logistic Air, Vandí Cooyar vandi@logisticair.com +1.775.636.7377 ext 101
GTCP85-98D	Available for Sale SN: P-30727C		Logistic Air, Vandí Cooyar vandi@logisticair.com +1.775.636.7377 ext 101
GTCP85-98DHF	Available for Sale SN: P-30291		Logistic Air, Vandí Cooyar vandi@logisticair.com +1.775.636.7377 ext 101
Q400 APU APS1000C12	Available for Sale Multiple ESNs	Serviceable, EASA Certified. Located in Europe	Executive Jet Support, Will Davis william@ejs.aero +44.1249.464757

LANDING GEAR LISTINGS

Model	Requirement	Config/Tech Information	Contact Details
737 Landing Gear	Available for Sale AR (MLG) SN: 33916	161A1100-31 - AR 161A1100-32 - AR	GA Telesis, James Ledbetter landinggearsales@gatelesis.com +1.954.406.0059
737-700 Landing Gear	Available for Sale - SV/Time Continued SN: ex Southwest	162A1100-9 161A1100-63 161A1100-64	GA Telesis, James Ledbetter landinggearsales@gatelesis.com +1.954.406.0059
737-700 Landing Gear	Available for Sale AR (MLG) SN: 33884	161A1100-31 - AR 161A1100-32 - AR	GA Telesis, James Ledbetter landinggearsales@gatelesis.com +1.954.406.0059
737-800 Landing Gear	Available for Sale - SV/Time Continued SN: 3343	162A1100-5 161A1100-39 161A1100-40	GA Telesis, James Ledbetter landinggearsales@gatelesis.com +1.954.406.0059
767 - 409K - Landing Gear	Available for Sale - As Removed SN: 25760	162T0000-505 - AR 161T0000-669 - AR 161T0000-670 - AR	GA Telesis, James Ledbetter landinggearsales@gatelesis.com +1.954.406.0059
767 - 409K - Landing Gear	Available for Sale - As Removed SN: 25762	162T0000-505 - AR 161T0000-669 - AR 161T0000-670 - AR	GA Telesis, James Ledbetter landinggearsales@gatelesis.com +1.954.406.0059
767-300ER - Landing Gear	Available for Sale - Overhauled *New REDUCED Price! SN: 33048	162T0000-505 - OHC 161T0000-817 - OHC 161T0000-818 - OHC	GA Telesis, James Ledbetter landinggearsales@gatelesis.com +1.954.406.0059
777-300ER Landing Gear	Available for Sale		Jet Midwest, Derick Hopkins derick.hopkins@jetmidwest.com +1.816.984.8263
A310 Landing Gear	Available for Sale	Complete LG shipset. No damage history. BTB records available.	Seres Aviation, Ugur Kalkan ugur@seresaero.com +90.212.603.6330
A320 Landing Gear	Available for Sale, Lease or Exchange in OHC	NLG: D23757500-8 LMLG: 201582001-080 RMLG: 201582002-080	GearUp Aviation, Mark Brown markb@gearupav.com +1.305.345.0124
A320 Landing Gear	Available for Sale - SV/Time Continued SN: 1253	D23589520-12 201581001 201581002	GA Telesis, James Ledbetter landinggearsales@gatelesis.com +1.954.406.0059
A320 Landing Gear	Available for Sale - OHC SN: 3343	D23757500-11 201582001-040 201582002-040	GA Telesis, James Ledbetter landinggearsales@gatelesis.com +1.954.406.0059
A320 Landing Gear	Available for Sale - First time Overhaul SN: 5407	D23757500-9 - OHC 201582001-060 - OH C201582002-060 - OHC	GA Telesis, James Ledbetter landinggearsales@gatelesis.com +1.954.406.0059
A330 Landing Gear	Available for Sale - As Removed SN: 109	D23285101-217 201252005 201252002	GA Telesis, James Ledbetter landinggearsales@gatelesis.com +1.954.406.0059
A330 Landing Gear	Available for Sale - As Removed SN: 118	D23285101-29 201252021 201252022	GA Telesis, James Ledbetter landinggearsales@gatelesis.com +1.954.406.0059

Model	Requirement	Config/Tech Information	Contact Details
A330 Landing Gear	Available for Sale - As Removed SN: 121	D23285101-218 201252021 201252022	GA Telesis, James Ledbetter landinggearsales@gatelesis.com +1.954.406.0059
A330 Landing Gear	Available for Sale - As Removed SN: 234	D23581100-20 201252021 201252022	GA Telesis, James Ledbetter landinggearsales@gatelesis.com +1.954.406.0059
A330 Landing Gear	Available for Sale - As Removed SN: 106	D23285101-217 201252021 201252022	GA Telesis, James Ledbetter landinggearsales@gatelesis.com +1.954.406.0059
A340 Landing Gear	Available for Sale - As Removed SN: 702	10-100101-032 - AR 10-120104-002 - AR 10-120204-002 - AR 10-110104-002 - AR	GA Telesis, James Ledbetter landinggearsales@gatelesis.com +1.954.406.0059
			
A340 Landing Gear	Available for Sale - As Removed SN: 606	10-100201-026 - AR 10-120104-002 - AR 10-120204-002 - AR	GA Telesis, James Ledbetter landinggearsales@gatelesis.com +1.954.406.0059
A340 Landing Gear	Available for Sale - As Removed SN: 601	10-100201-023 - AR 10-120104-002 - AR 10-120204-002 - AR 10-113104-0011 - AR	GA Telesis, James Ledbetter landinggearsales@gatelesis.com +1.954.406.0059
A340 Landing Gear	Available for Sale - As Removed SN: 460	10-100201-023 - AR 10-120104-002 - AR 10-120204-002 - AR 10-113104-0011 - AR	GA Telesis, James Ledbetter landinggearsales@gatelesis.com +1.954.406.0059
ATR72-500 Landing Gear shipset	Available for Sale	As shipset or individual components. Currently at MRO. Fresh from shop visit. Lead time 30 days	Executive Jet Support, Lee Robinson lee@ejs.aero +44.1249.464757
B757 Landing Gear	Available for Sale	Complete LG shipset available.	Jet Midwest, Derick Hopkins derick.hopkins@jetmidwest.com +1.816.984.8263
B757 Landing Gear	Available for Sale	Complete LG shipset. Three cycles since overhaul by Lufthansa. OH date Nov19	Seres Aviation, Ugur Kalkan ugur@seresaero.com +90.212.603.6330

Contact Us:

publishing@wingslist.com

or

+1.949.354.4279

PLACE YOUR ADVERTISEMENT HERE OR ANYWHERE WITHIN THE LISTINGS!



WINGSLIST.COM

your aircraft, engine, and accessory trading publication

Model	Requirement	Config/Tech Information	Contact Details
B767-300 Landing Gear	Available for Sale		Jet Midwest, Derick Hopkins derick.hopkins@jetmidwest.com +1.816.984.8263
BAE146 / RJ NLG & MLG shipset	Available for Sale	As shipset or individual gears. Various cycles remaining.	Executive Jet Support, Rob McManus rob@ejs.aero +44.1249.464757
EMB145 Landing Gear shipset	Available for Sale	As shipset or individual components.	Executive Jet Support, Lee Robinson lee@ejs.aero +44.1249.464757

NACELLE LISTINGS

Model	Requirement	Config/Tech Information	Contact Details
A330 CF6 Core Cowl PN 224-2301- 525	Available for Sale	OH condition, stock USA lead time 45 days	Executive Jet Support, George Jobbins george@ejs.aero +44.1249.464757
A330 CF6 Core Cowl PN 224-2302- 549	Available for Sale	OH condition, stock USA lead time 45 days	Executive Jet Support, George Jobbins george@ejs.aero +44.1249.464757
A330 CF6 Inlet Cowl PN 277-1100- 507	Available for Sale	SV condition, Collins tag, stock UK	Executive Jet Support, George Jobbins george@ejs.aero +44.1249.464757
A330 PW4000 T/R 70M000- 515	Available for Sale	Fresh from shop visit. Lead time 30 days	Executive Jet Support, Marc Browse marc@ejs.aero +44.1249.464757
A330 Trent700 Common Nozzle PN FK16717	Available for Sale	OH condition, stock USA lead time 45 days	Executive Jet Support, George Jobbins george@ejs.aero +44.1249.464757
A330 Trent700 Inlet Cowl PN SJ30820	Available for Sale	OH condition, stock USA	Executive Jet Support, George Jobbins george@ejs.aero +44.1249.464757
A330 Trent700 Inlet Cowl PN SJ30810	Available for Sale	OH condition, stock USA	Executive Jet Support, George Jobbins george@ejs.aero +44.1249.464757
A330 Trent700 T/R PN HDTR3415L	Available for Sale	OH condition TSN 77344 CSN 12969. Lead time TBC.	Executive Jet Support, George Jobbins george@ejs.aero +44.1249.464757
A330 Trent700 T/R PN HDTR3418R	Available for Sale	OH condition TSN 40511 CSN 9378. Lead time TBC.	Executive Jet Support, George Jobbins george@ejs.aero +44.1249.464757

Model	Requirement	Config/Tech Information	Contact Details
GE90-115B Nacelle	Available for Sale	GE90-115B Engine Nacelles.	Jet Midwest, Ashley Santee asantee@jetmidwest.com +1.816.984.8432
GE90-94B Nacelle	Available for Sale	GE90-94B Engine Nacelles.	Jet Midwest, Ashley Santee asantee@jetmidwest.com +1.816.984.8432
PW4000 Nacelle	Available for Sale	PW4000 - 94" & 112" Engine Nacelles	Jet Midwest, Ashley Santee asantee@jetmidwest.com +1.816.984.8432
RB211-535 Nacelle	Available for Sale	RB211-535 Inlet cowls. AD compliant.	Jet Midwest, Ashley Santee asantee@jetmidwest.com +1.816.984.8432
Trent 700 Nacelle	Available for Sale		Jet Midwest, Ashley Santee asantee@jetmidwest.com +1.816.984.8432
Trent 800 Nacelle	Available for Sale	Trent 800 Engine Nacelles. AD/SB compliant with BTB records.	Jet Midwest, Ashley Santee asantee@jetmidwest.com +1.816.984.8432

MISCELLANEOUS LISTINGS

Model	Requirement	Config/Tech Information	Contact Details
Spanish AOC 121 Charter and Schedule Operations	Available for Sale	A320,A330 operated. USA DOT approve and 129 spec.	JMB Aviation, Julio Marquez julio_marquez@jmbaviationgroup.com +1.786.200.7389

SUBSCRIPTION INFORMATION

To order a subscription, please visit our website or provide the following to publishing@wingslist.com:

Name
Title
Company
Address
Telephone
Email

- | | |
|---|-------------------|
| <input type="checkbox"/> Commercial Air Transport Aircraft Market – one-year, individual subscription | \$450.00 |
| - Provides information on the availability of single-aisle and larger Aircraft, Rotorcraft, Engine Stands, Engines, Landing Gear, APUs, and Nacelles | |
| <input type="checkbox"/> Regional and Commuter Aircraft Market – one-year, individual subscription | \$450.00 |
| - Provides information on the availability of Regional Jet and Turboprop Aircraft, Rotorcraft, Engine Stands, Engines, Landing Gear, APUs, and Nacelles | |
| <input type="checkbox"/> Order BOTH editions at a \$100 discount on one-year, individual subscription | \$800.00 |
| <input type="checkbox"/> Order BOTH editions – one-year, corporate subscription, up to 20 individuals | \$3,250.00 |

All listings are included with your subscription. Listings without a subscription are \$100 per month per listing.